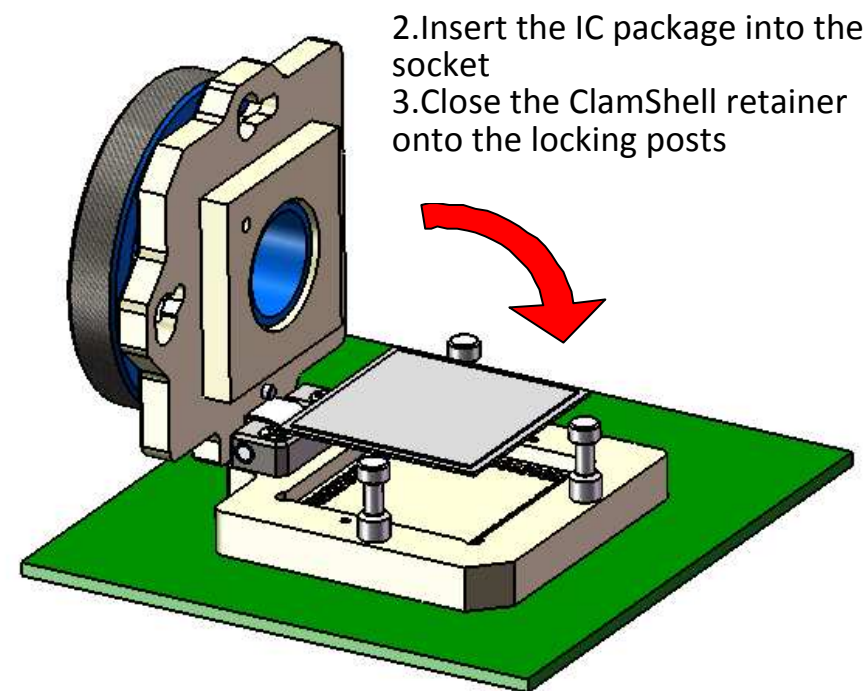
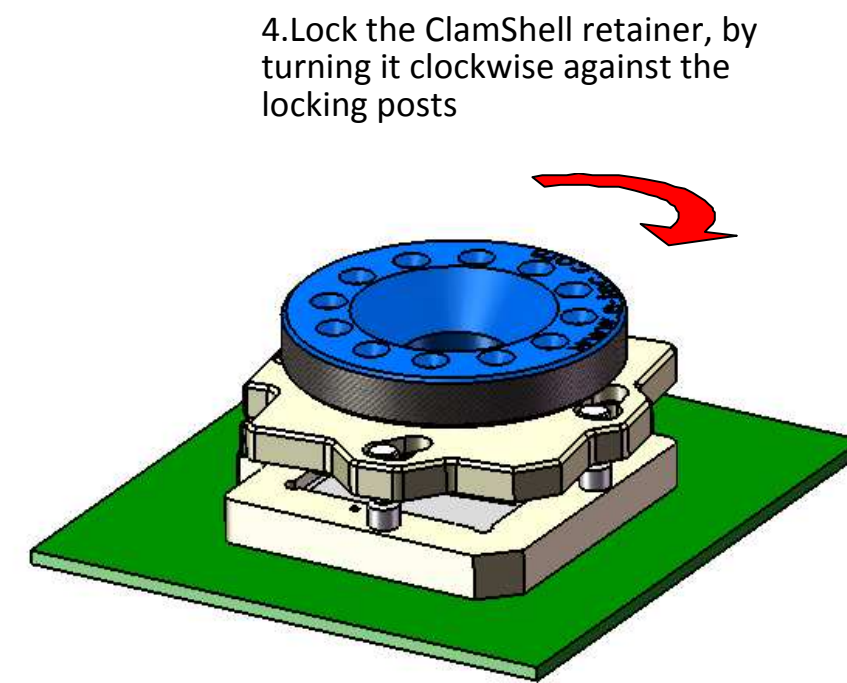


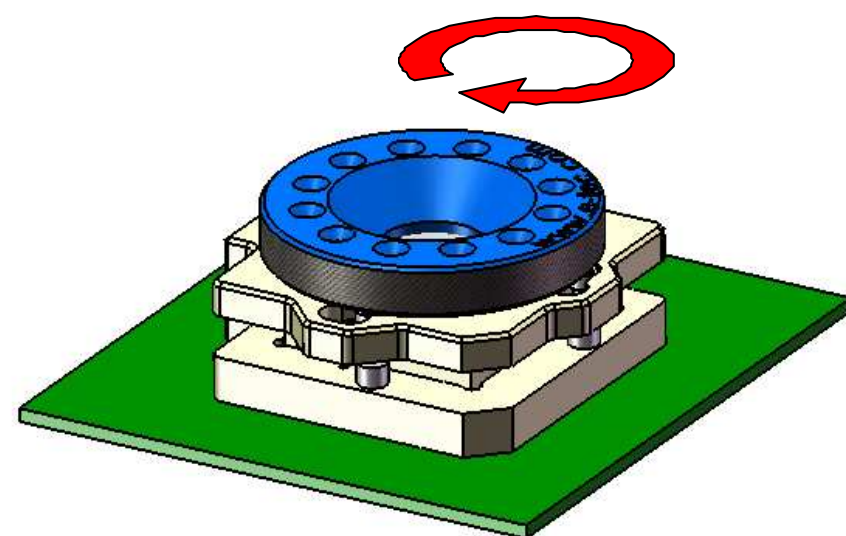
1:Mount the socket to the PCB  
Note: For SMT sockets, we recommend that you remove the ClamShell retainer prior to soldering and to attach it again after the soldering process. The retainer can be removed by loosening the 2 x M2 screws.



2.Insert the IC package into the socket  
3.Close the ClamShell retainer onto the locking posts



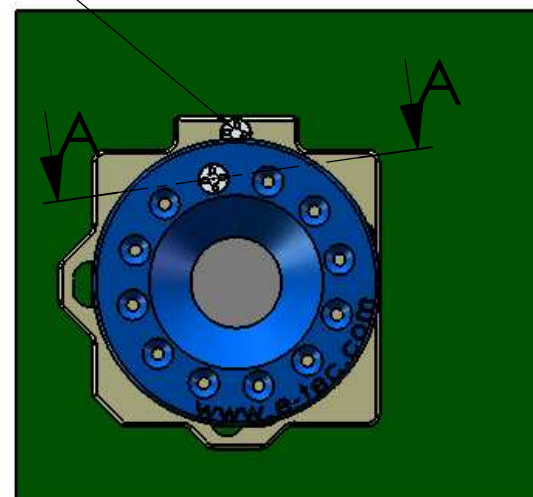
4.Lock the ClamShell retainer, by turning it clockwise against the locking posts



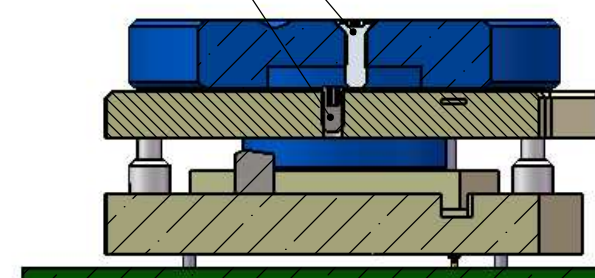
5.Turn the thumbscrew on the ClamShell retainer clockwise up to the desired pressdown force

If required or preferred, it is possible also to pre-set the pressdown forces of the socket and in this case please follow the steps 6 to 8.

6.Insert the M2x6 "philips head" screw in the screw hole preceding the stopper screw location

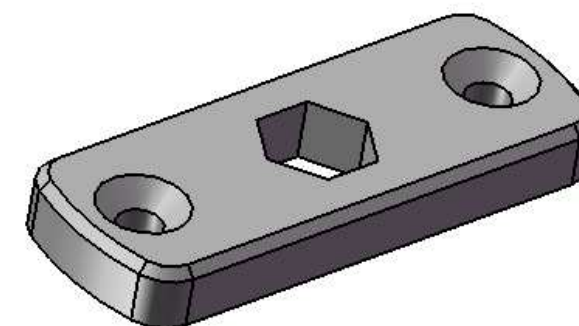


Stopper screw M2x6  
Screw M2x4  
COUPE A-A  
ECHELLE 1.5 : 1




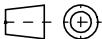
7.Turn the thumbscrew backwards (counter-clockwise) until you can access the M2 "allen type" screw (located below the thumbscrew) through a free screw hole using an allen key size 1.

8. Loosen the M2x4 allen screw until it will reach the "stopper height position", i.e. until it will prevent the "philips head" M2x6 screw to go beyond the "allen" screw.



Optional torque tool fixture:  
If you wish to use this locking system with a torque tool, then please request a special torque tool fixture (metal bar with an allen key hole), which can be mounted to the Economy ClamShell retainer.  
Note: This is an optional fixture and needs to be ordered specifically.

NOTE: The Economy ClamShell can also be used without the M2 stopper screws. If you do not wish to preset the pressdown forces then simply remove the M2 screws from the Economy ClamShell retainer.

UNLESS OTHERWISE SPECIFIED: DIMENSIONS ARE IN MILLIMETERS SURFACE FINISH: GENERAL TOLERANCES ISO 2768m		Remark:		<div><b>E-tec</b> Interconnect</div> <div>www.e-tec.com</div>		
		Visa	Date	Drawn by	Date	Visa
DRAWN		sme	09.09.2010	sme	02.09.2010	
CHK'D				Echelle: 1:1		
APPV'D		sme	09.09.2010			
				"E-tec order code"		
The information contained in this drawing is proprietary to Etec and shall not be reproduced or disclosed in whole or in part or used for any design or manufacture except where such user possesses direct, written authorization from Etec		MATERIAL:			"Production code"	
		WEIGHT:			Instructions for Economy ClamShell	
			Revision			
			SHEET 1 OF 1			